

FORT TOTTEN SQUARE

District of Columbia



UNDER CONSTRUCTION



FORT TOTTEN SQUARE

District of Columbia
3rd Street and Riggs Road, NE
Washington, D.C.

SPACE AVAILABLE

1,700 sq. ft. end cap

GROSS LEASABLE AREA

130,000 sq. ft.

DELIVERY DATE

4th Quarter 2014

PROPERTY OVERVIEW

Fort Totten Square is a new mixed-use development that will feature approximately 350 residential units, in addition to a 120,000 square foot urban-format Walmart.

RETAILERS COMING SOON

Walmart
Carolina Kitchen
Subway

2014 DEMOGRAPHICS

| RADIUS | HH INCOME | POPULATION |
|---------|-----------|------------|
| 1 mile: | \$66,897 | 32,603 |
| 3 mile: | \$79,005 | 302,777 |
| 5 mile: | \$105,511 | 735,324 |

TRAFFIC COUNT

30,319 vehicles daily on Riggs Road, NE

CONTACT

John Mitchell 301-657-7336
jmittell@jbgr.com

Bob Schwenger 301-657-7331
bschwenger@jbgr.com

FORT TOTTEN SQUARE

District of Columbia

SITE PLAN



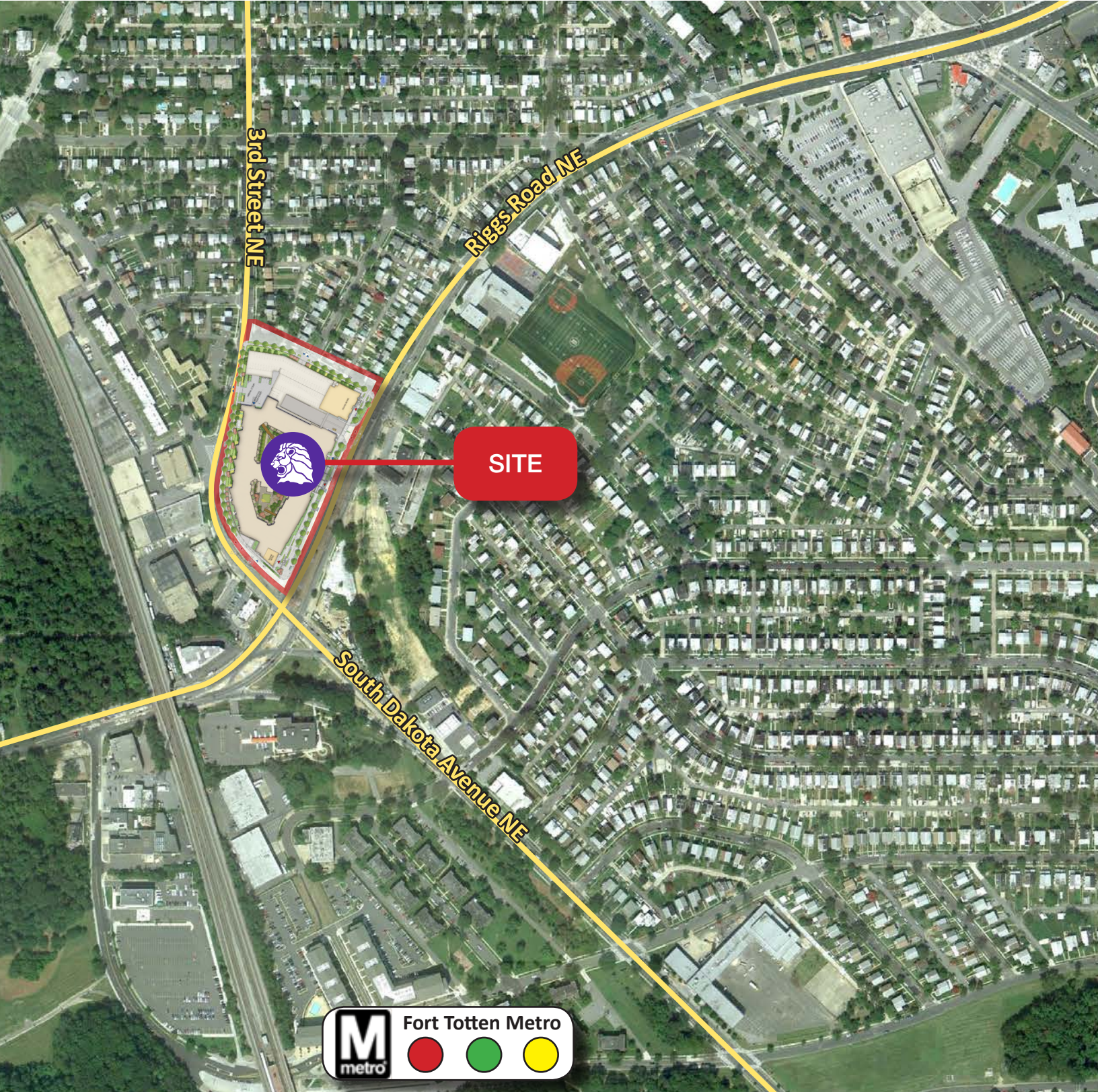
| | | |
|---|------------------|----------|
| 1 | Available | 1,700 sf |
| 2 | Subway | 1,591 sf |
| 3 | Carolina Kitchen | 5,969 sf |

FORT TOTTEN SQUARE

District of Columbia



AERIAL VIEW

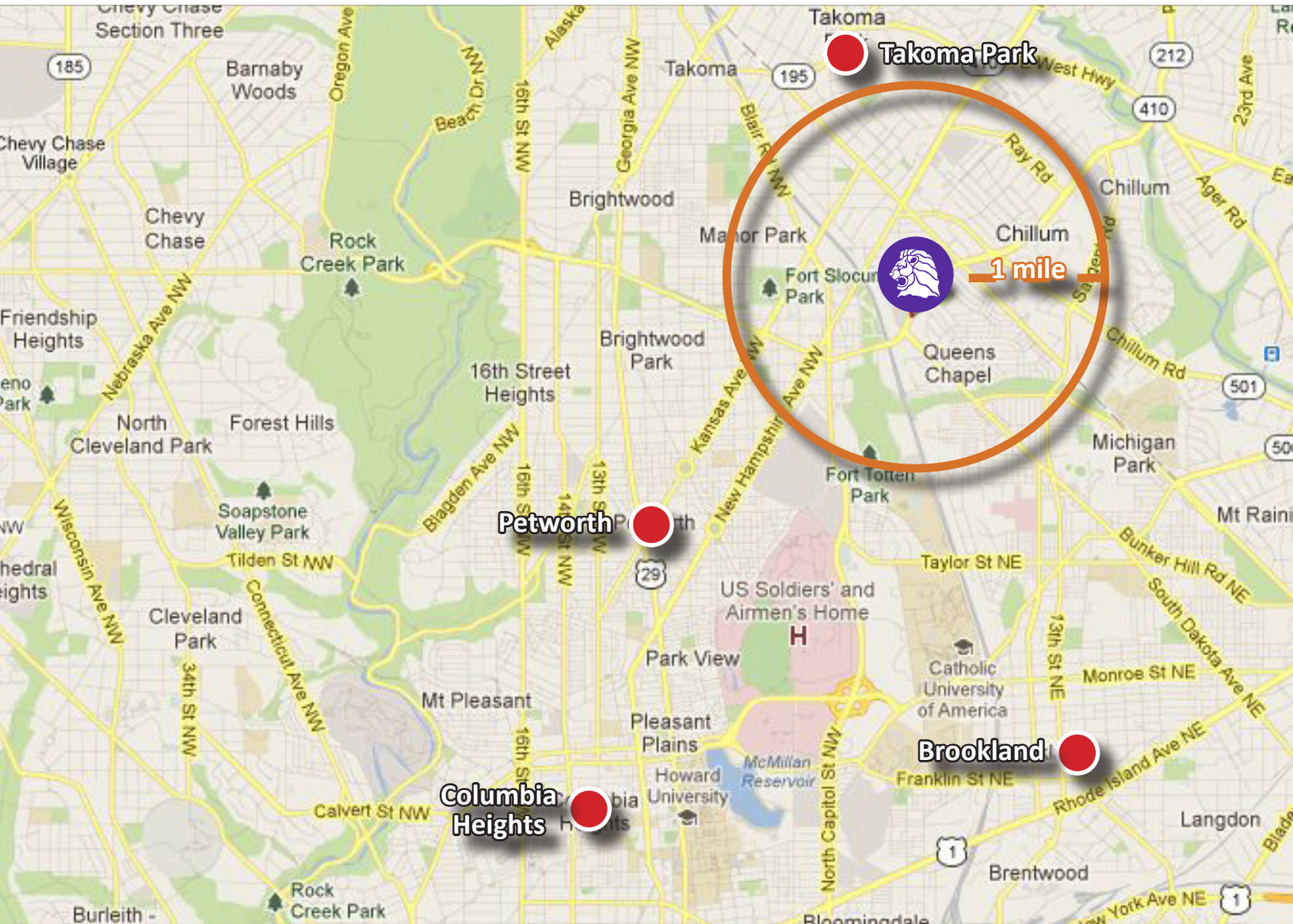


FORT TOTTEN SQUARE

District of Columbia



MAP



FORT TOTTEN SQUARE

District of Columbia



SITE RENDERINGS

