



Presentation to ANC 5A08



September 21, 2021
Greg Matlesky
Bicycle Program Specialist
DDOT



Join.



Take.



Ride.



Return.



What *isn't* Capital Bikeshare?

Scooters



Jump bikes



Join.



Take.



Ride.



Return.

What is Capital Bikeshare?



- Public transit system
- Program of DDOT and six other local jurisdictions
- 5,000+ bikes at 600 stations
- Designed to get you from point A to point B
- Complement to other forms of transportation
- “Last Mile” problem



Join.



Take.



Ride.

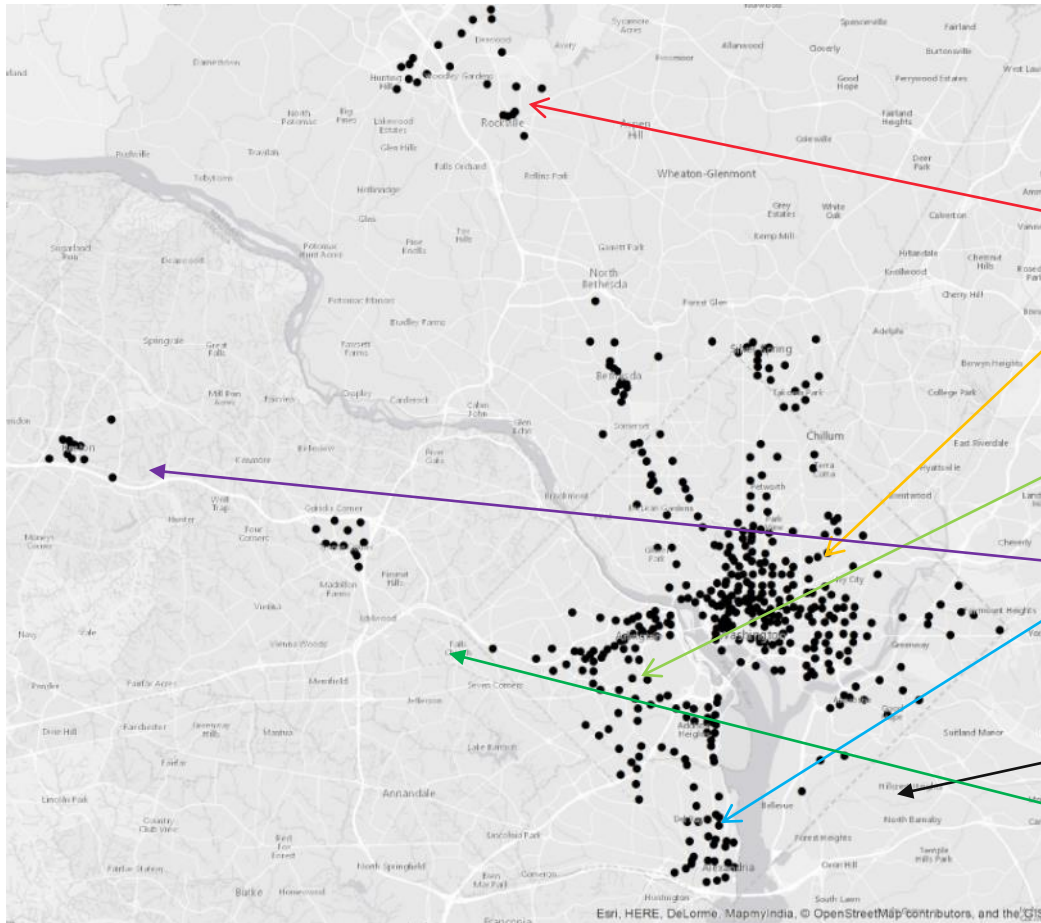


Return.

Capital Bikeshare™



Where is Capital Bikeshare?



600+ stations

Washington, DC

**Montgomery County,
MD**

Arlington County, VA

**City of Alexandria,
VA**

Fairfax County, VA:

**Prince George's
County Maryland**

Falls Church, VA



Join.



Take.



Ride.



Return.





To start, choose a membership.
(How long do you want access to the bikes?)

Membership and Usage Fees

Membership Fee	
24-hour	\$8
3-day	\$17
Day key	\$10 initial fee + \$7/day
30-day	\$28
Annual	\$85
Annual with Monthly Installments	\$96 (\$8/month for 12 months)

How to use CaBi?

- Join CaBi by choosing a membership type
- Unlock a bike from one of over 600 stations
- Ride to your destination
- Return your bike to any CaBi station
- *Download the CaBi app to locate stations, bikes, and docks*

! YOUR COST = Membership fee + Usage fee per trip

The first 30 minutes of EVERY trip are FREE throughout your membership period.

Trips beyond 30 minutes will incur usage fees.



Members save 25% on usage fees. You must use a credit card to join Capital Bikeshare.

For station locations, visit capitalbikeshare.com



Join.



Take.



Ride.



Return.



Why use CaBi?



- Another transportation option
- Connect to Metrorail and bus
- Add physical activity to your daily life
- Support District sustainability goals
- Save time *and* money
- Have fun!



Join.



Take.



Ride.



Return.

E-Bikes



- Returned to CaBi in July
- “E-Assist” provides power as you pedal
- Flattens hills, increases your distance, eliminates sweat!
- “Hybrid” can be docked at a station or at a bike rack at your destination for additional \$1
- \$1 charge to use



Join.



Take.



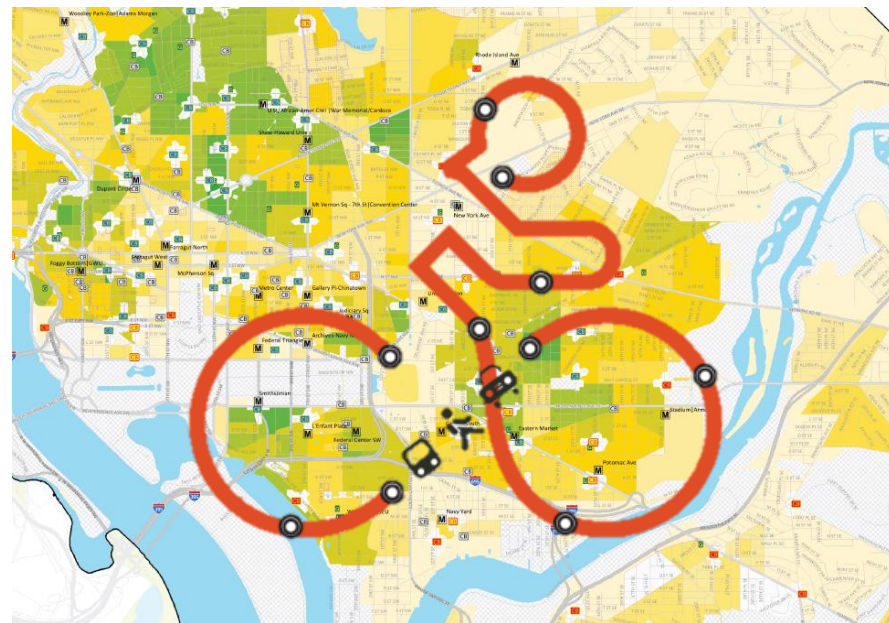
Ride.



Return.

Planning: Location Selection

- CaBi Development Plan
- Where will people ride?
- Where will we generate revenue?
- Where can we impact health and welfare?
- Where can we increase access?



Join.



Take.

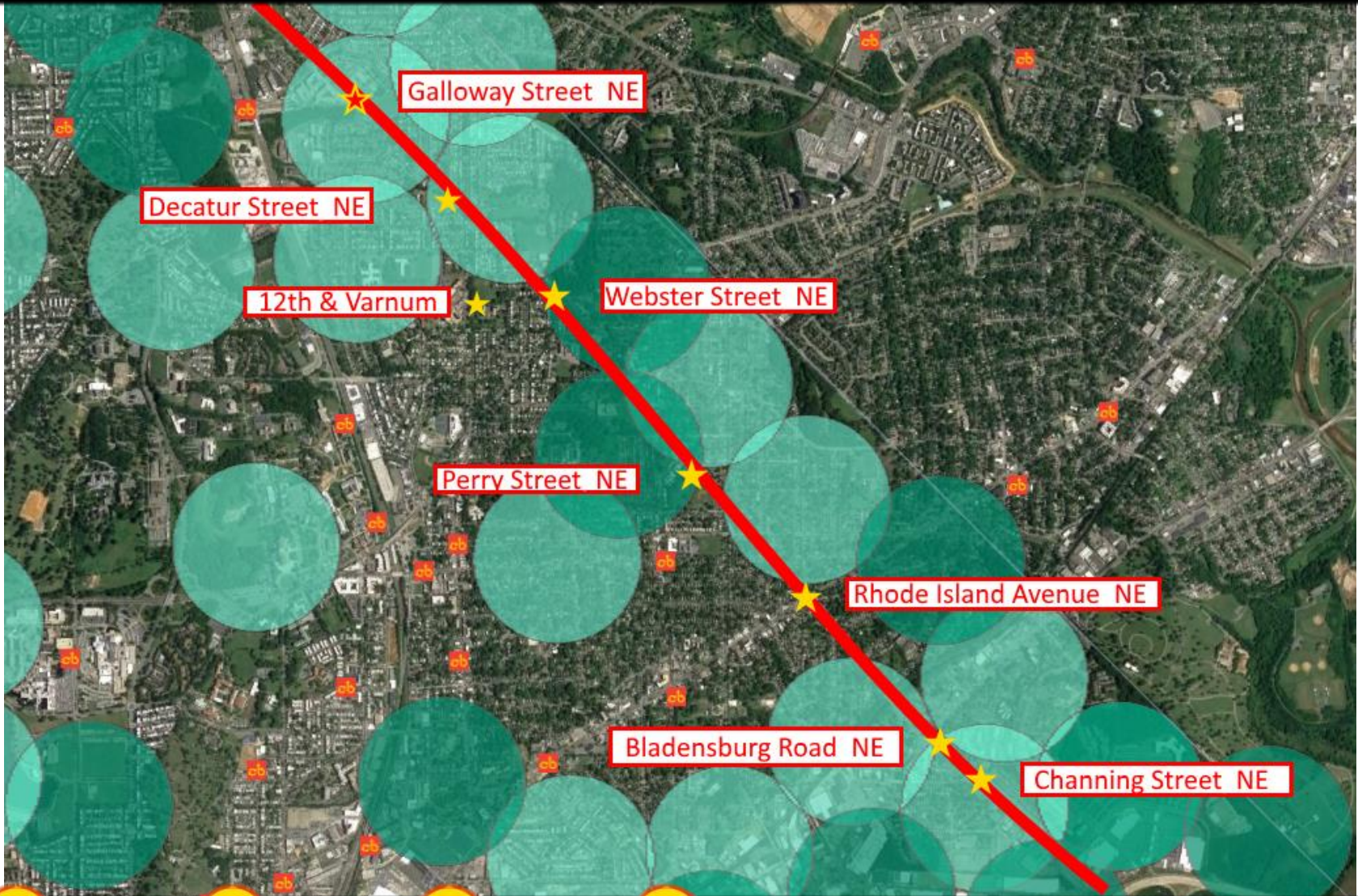


Ride.



Return.

Capital Bikeshare™



Join.



Take.



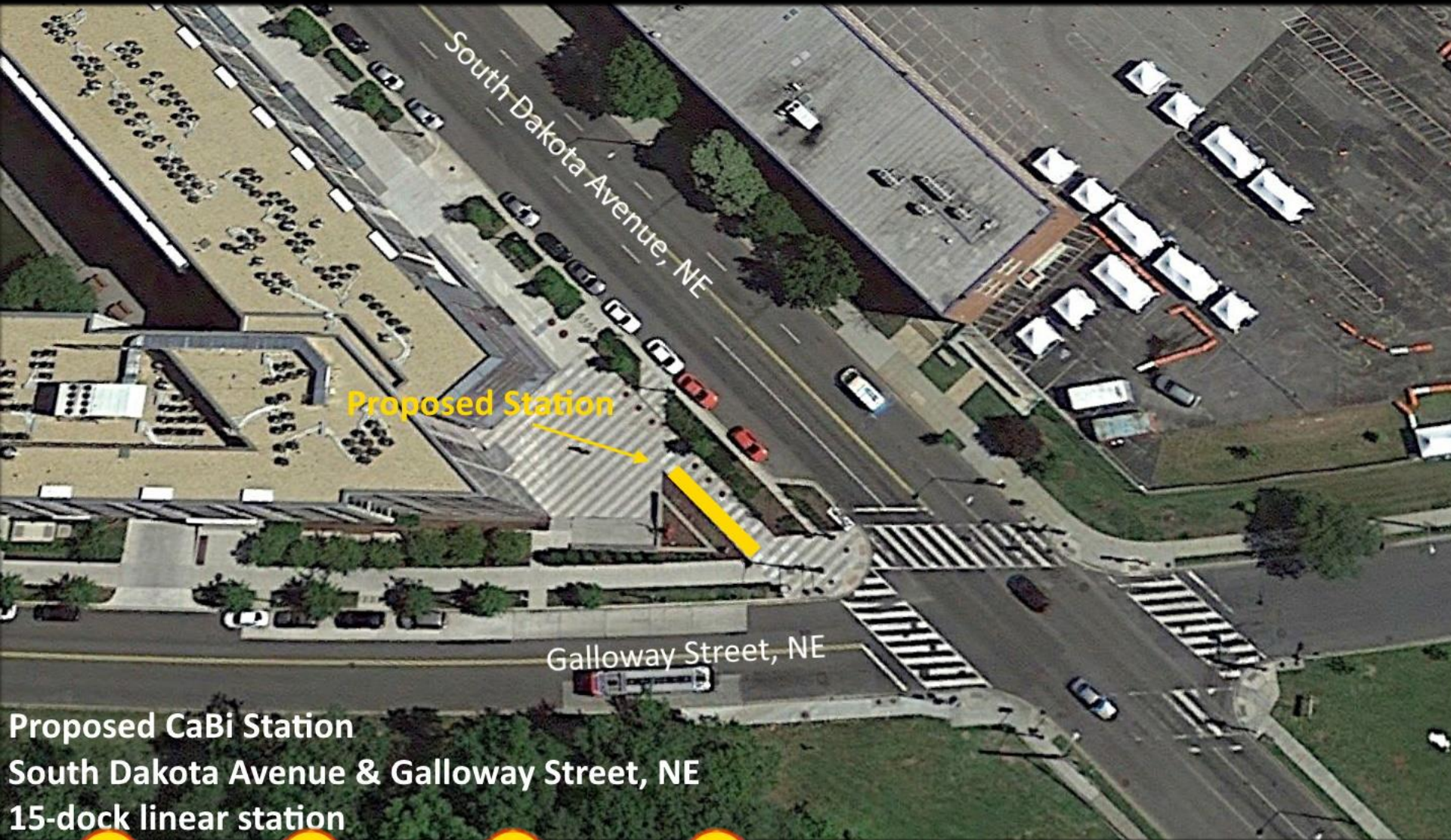
Ride.



Return.



Capital Bikeshare™



Proposed Station

Galloway Street, NE

South Dakota Avenue, NE

Proposed CaBi Station
South Dakota Avenue & Galloway Street, NE
15-dock linear station



Join.



Take.



Ride.



Return.

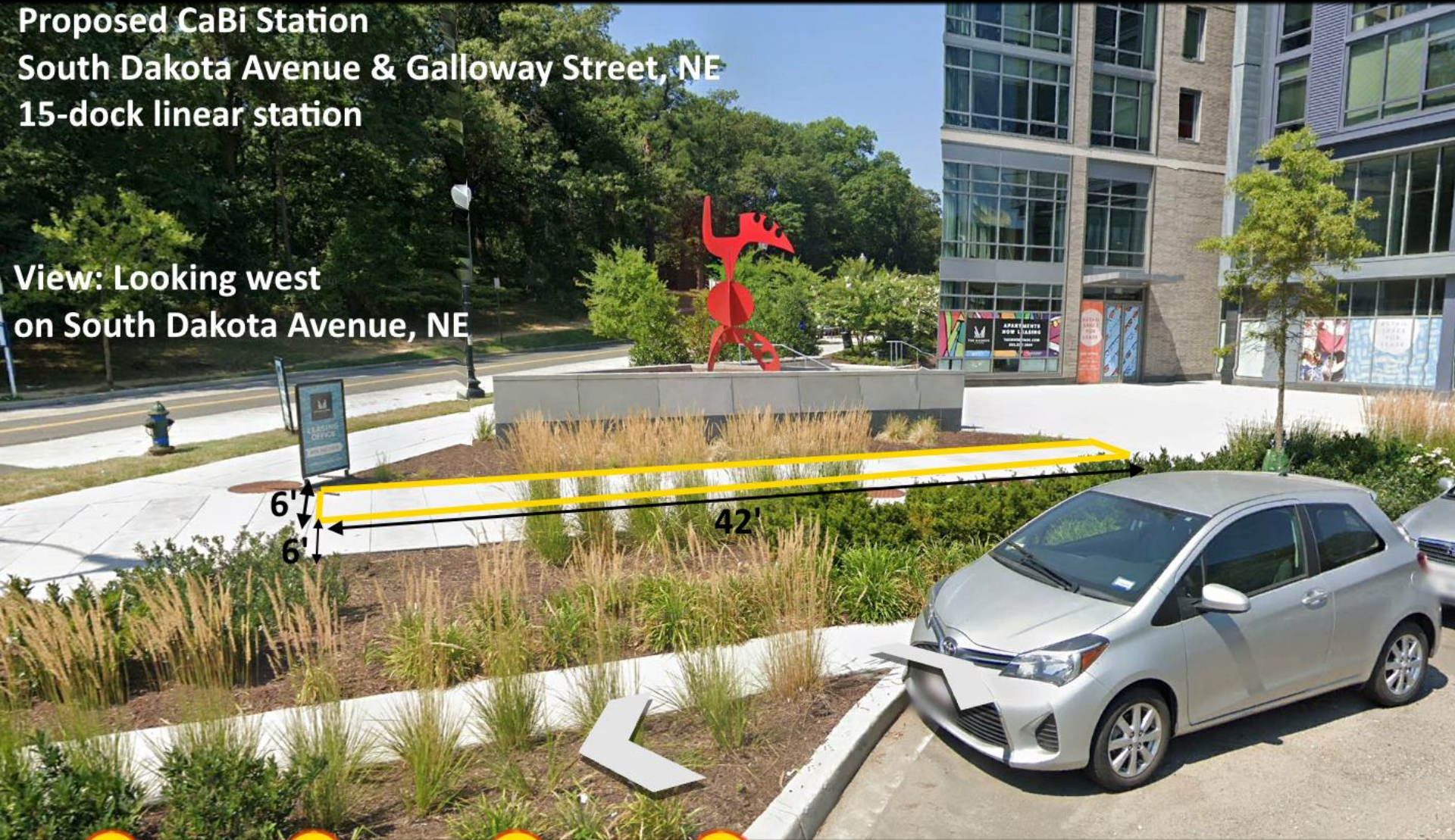


Capital Bikeshare™



Proposed CaBi Station
South Dakota Avenue & Galloway Street, NE
15-dock linear station

View: Looking west
on South Dakota Avenue, NE



Join.



Take.



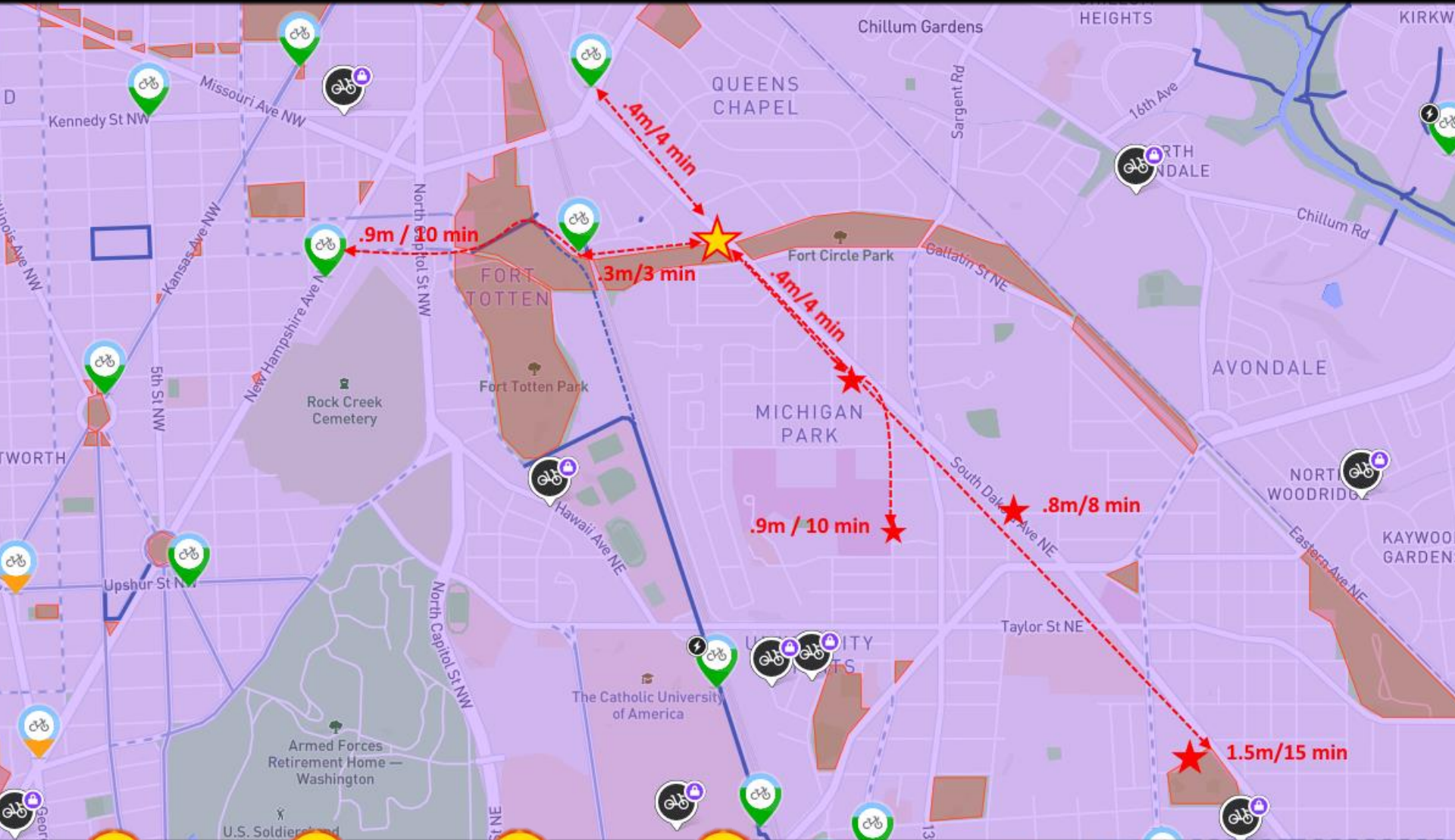
Ride.



Return.



Capital Bikeshare™



Join.



Take.



Ride.



Return.



Thank You!



Greg Matlesky

**Bicycle
Program Specialist**

**Greg.Matlesky@dc.gov
202-497-5086**