




\\vhb\gis\pro\Montpelier\34967.01 ROCR_TOTTEN_IRL\Project\Figure 1 - Site Location.mxd

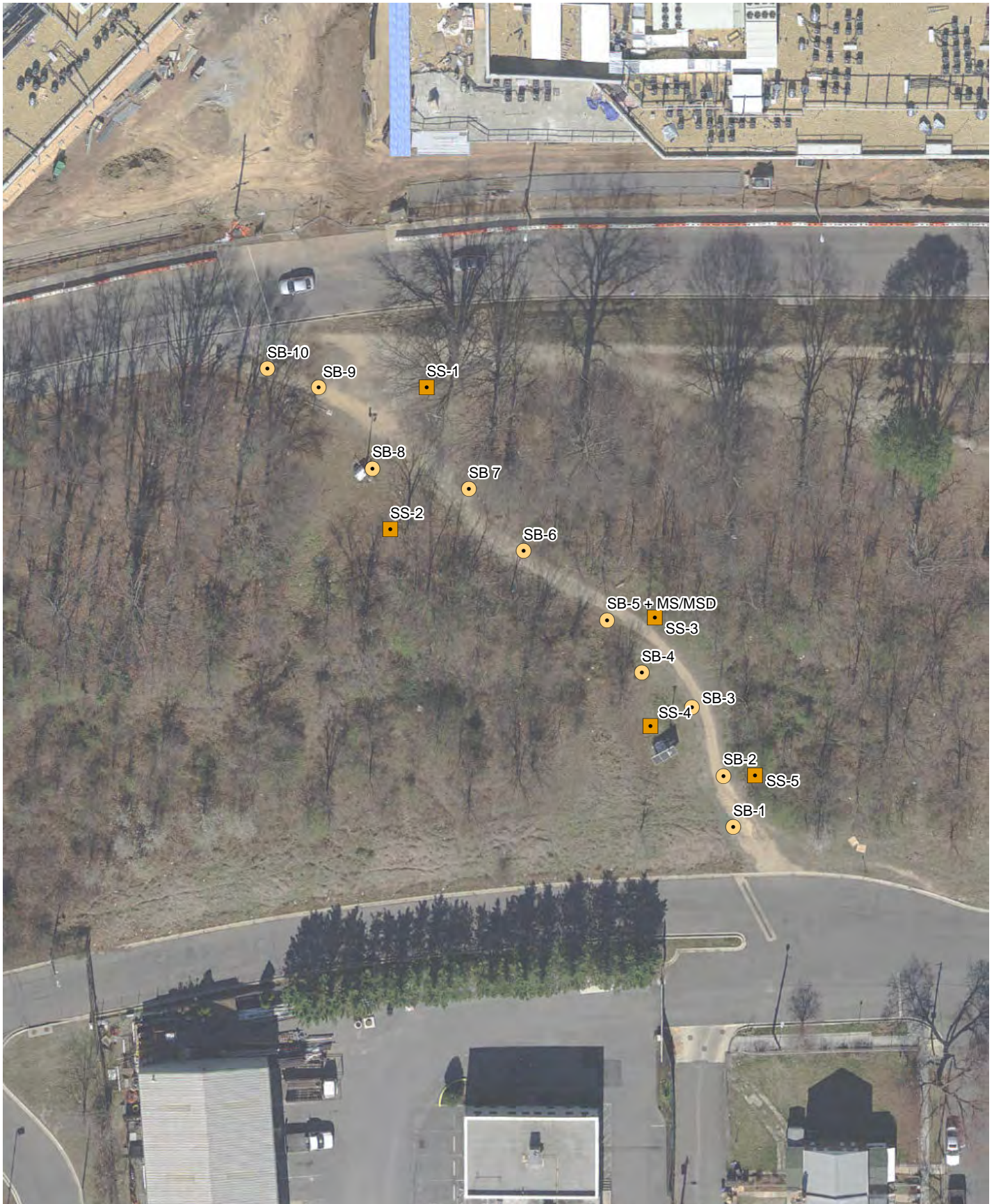


 Approximate Study Area

Fort Totten Park, Civil War Defenses of Washington | Washington, D.C.

Source Info:
Imagery and base map from ESRI (2019).

Site Location



\\vhb\gis\pro\Montpelier\34967.01 ROCR_TOTTEN_IRL\Project\Figure X Exploration Location Plan.mxd



- Soil Boring Sample
- Composite Surface Soil Sample

Fort Totten Park, Civil War Defenses of Washington | Washington, D.C.

Source Info:
Imagery and base map from ESRI (2019).

**Exploration
Locations**